

Please Note: The electronic version of this digest was lost...please excuse this scanned version.

DAHLIA DIGEST

DAHLIA SOCIETY OF OHIO

Since 1930

VOL. 2008 ISSUE 1

February, 2008



New Date –THIRD Fridays

FEBRUARY 15 MEETING

7:30 p.m.

Busch Community Room

7501 Ridge Road, Parma

Just south of Pleasant Valley Road

PROGRAM

DVD Night

New Dahlia Introductions for 2008

Dahlia conversation, e.g., how well

are your dahlias sleeping.



President's Notes

Hi Folks,

Hope everybody had a great holiday season and a good start to 2008. Not much to talk about, just a few notes.

Don't forget to check your tubers and see how they're coping with this winter of fluctuating temperatures. Don't want them to wither.

Don't forget our February meeting is February 15th, the third Friday of the month. This will be the case for all our monthly meetings.

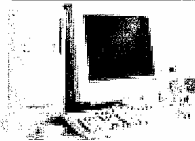
We still have a vacancy for our Recording Secretary position. It sure would be nice to fill this position soon. Hint, hint!

Thanks to Barb Hosta for putting together a great Christmas Party at Harry's Restaurant. Much appreciated by all!

Hoping to see you all at February's meeting, featuring the new "dahlia introductions." Don't forget your membership dues if you haven't already paid them.

See you Friday for great dahlia conversation!!

Mike



**VISIT OUR DSO WEBSITE
SHARON SWANEY, WEBMASTER
WWW.DAHLIASOCIETYOFHIO.ORG**

OFFICERS-CHAIRS/PHONE NUMBERS

MIKE WEBER, President.....440-647-3162
BARBARA HOSTA, First Vice President.....216-524-2635
DAVE CAP, Second Vice President.....440-888-5589
JOANN BENDOKAITIS, Treasurer.....440-543-4515
YOUR NAME?, Recording Secretary.....???-???-????
MARYANN MORENO, Corresponding Secretary....
440-543-5658
JOHN BENDOKAITIS, Membership Chair....440-543-4515
BARBARA HOSTA, Digest Co-Editor.....216-524-2635
e-mail: bxh5@po.ewru.edu
JERRY MORENO, Digest Co-Editor.....440-543-5658
e-mail: maryannjerry@alltel.net or moreno@jcu.edu
KATIE JANDA, Sunshine Chair.....440-285-2385
JERRY MORENO, ADS Representative.....440-543-5658

PROGRAMS for 2008

**Refreshments for February:
Joann Bendokaitis, Barbara Hosta,
MaryAnn Moreno, Marilyn Weber**

Feb 15 DVD's on New Introductions and more
March 21 A program on Soil Testing
April 18 DSO Annual Tuber Auction
May 16 DSO Annual Plant/Tuber Auction
June 20 Container Gardening with Dahlias
July Picnic...site to be determined
August Bus Trip to Local Dahlia Gardens and the
MVDS Trial Garden, Fellows Riverside Garden
October 17 Digging, Storing, Dividing
November 21 Photo Contest
December 5 Holiday Dinner Meeting.....FIRST Friday



SHOW SCHEDULE for 2008

Cuyahoga County Fair	Aug 9
Mahoning Valley Show	Aug 23,24
Geauga County Fair	Aug 29 setup
DSO 78th Annual	Sept 6-7
Midwest Show Cincinnati	Sept 13-14
National Show Philadelphia	Sept 18-21
East Liverpool	

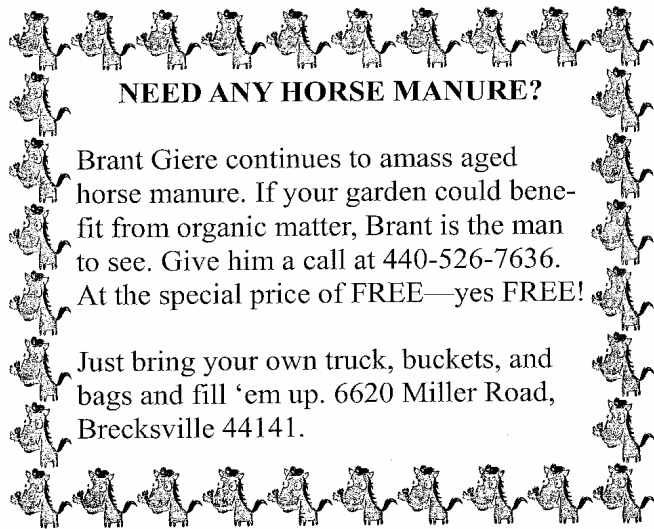


TUBER/PLANT SALES for 2008

Pettiti's Oakwood	April 12
Pettiti's Strongsville	April 13
DSO Annual Tuber Auction	April 18
Holden Arboretum	May 2-4
Rockefeller Gardens	May 16-18
DSO Annual Plant Auction	May 16

Your Dahlia TO DO Checklist:

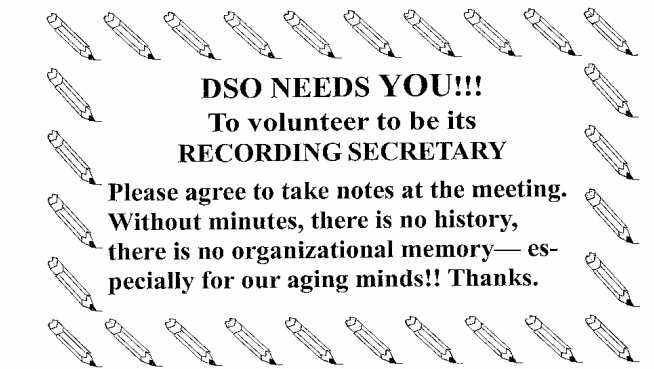
- Check your stored tubers—if lots of mush, then wait patiently for DSO's fab tuber and plant sales, or if you have ants in your pants — Check out www.dahlias.net/dbiglist.htm for suppliers.
- Attend DSO meetings and ask questions. We have many expert growers who are more than willing to share their expertise.
- Get involved in one or more DSO activities this year, e.g., assist at one of our sales, help setup a show, become a clerk at a show or better yet, become an apprentice judge. It really is a lot of fun!
- Share your dahlia blooms with friends or shut-ins or take a vase to the local post office, your doctor's office, especially dentist's office—maybe they won't drill so deeply next time!!



NEED ANY HORSE MANURE?

Brant Giere continues to amass aged horse manure. If your garden could benefit from organic matter, Brant is the man to see. Give him a call at 440-526-7636. At the special price of FREE—yes FREE!

Just bring your own truck, buckets, and bags and fill 'em up. 6620 Miller Road, Brecksville 44141.



DSO NEEDS YOU!!!
To volunteer to be its
RECORDING SECRETARY

Please agree to take notes at the meeting.
Without minutes, there is no history,
there is no organizational memory— especially for our aging minds!! Thanks.

DAHLIA CULTURE—FEBRUARY

What storage method are you using? How is it going so far two-thirds of the way through the dahlia storage phase? We hope quite well.

One popular storage method is to place 5 to 8 tubers in a 1-gallon zip lock storage bag along with 2 or 3 cups of coarse vermiculite. Quart size bags work well for 4 or fewer tubers or very small tubers. What vermiculite does better than any other storage medium (sawdust, sand, potting soil mix) is to absorb excess moisture given off by the stored tubers. Seal and store bags of tubers in cardboard boxes or plastic bins in a dry cool place until spring. Use layers of newspapers for added insulation if necessary. It's very important that your storage area does not freeze. The ideal temperature for stored dahlias is between 40 and 45 degrees. Check on your stored tubers once a month to make sure they are not rotting or shriveling. If they seem too moist then repack with dry vermiculite. If they are drying out then spray a little water into the bag. Any rotting material should be removed immediately. The ideal storage location would be an old root cellar. Most of us, however, will have to make due with a less efficient location. The crawl space under the house, an unheated but insulated garage or even an old unplugged refrigerator will do.

Note: The above was based on notes from Steve Nowatarski.

DAHLIA GOLD
The Top 50 Show Dahlias of 2007
Across the Country
Ranked by total show awards

Embrace	BB-SC-Y
Valley Porcupine	NX-LB-w/pk
Mary's Jomanda	BA-DP
Camano Pet	ST-LB y/or
Elvira	PE-DP
Pam Howden	WL-LB-y/or/dp
Weston Spanish Dancer	M-C-FL
Spartacus	A-FD-DR
Hamari Accord	B-SC-Y
Inland Dynasty	AA-SC-Y
Kenora Jubilee	A-SC-W
April Dawn	B-ID-LB l/w
Honka	O-Y
Cornel	BA-DR
Camano Sitka	B-IC-DB-y/br
Zorro	AA-ID-DR
Edna C	B-FD-Y
Taratahi Lilac	BB-IC-LB-l/w
Alpen Diamond	CO-LB-L/w
Jomanda	BB-FD-OR
Brookside J Cooley	M-ID-Y
Kathy's Choice	M-C-Y
Mary Jo	M-SC-PK
Jessica	BB-IC-BI-y/r

Pooh	CO-BI-or/y/y
Vassio Meggos	A-ID-L
Alpen Cherub	CO-W/w
Jessie G	BA-PR
Trengrove Millenium	B-FD-Y
Chimacum Troy	MB-PR
Inflammation	MS-OR
Snoho Doris	BA-DB-r/br
Magic Moment	B-SC-W
Rembrandt	MS-DR
Cameo	WL-Y
Glenbank Twinkle	M-C-LB-w/pr
Ryecroft Jan	M-FD-W
Rose Toscano	M-FD-OR
Marie Schnugg	O-R
Taratahi Ruby	WL-R
Alloway Candy	ST-PK
Aitara Caress	M-C-LB pk/w
Sean C	CO-PR pr/db/w/pr
Elsie Huston	A-ID-PK
Weston Pirate	M-C-DR
Peach Delight	B-SC-PK
Kidds Climax	A-FD-LB-pk/y
Danum Meteor	AA-SC-R
Powder Gull	PE-PK
Brenda Sue	PE-OR

The above list may be found at www.dahlia.net/ along with a list of suppliers where you can find the varieties for purchase.



**The Beginner's Corner:
Do's and Don'ts**

Purchasing Dahlia Tubers

**Just entering the new wonderful
world of growing dahlias?
Here are some beginning tips from
Richard Parshall,
Trustee, Snohomish County Dahlia Society.**

**DO: Buy your tubers from reputable
dahlia growers or nurseries. Quality
makes a difference.**

**DON'T: Buy cheap packaged dahlia
tubers from overseas at thrift garden
outlets. The flowers seldom resemble
the pictures.**

**DO: Buy tubers with visible eyes lo-
cated at the stem end of the tuber.**

**DON'T: Buy a tuber that doesn't
have an eye showing unless the seller**

or an expert can locate it for you. They are sometimes difficult to see.



DO: Buy plump, healthy looking tubers with no sign of decay.

DON'T: Purchase shriveled, skinny tubers or those showing any sign of rot or decay.

DO: Buy your tubers from a local dahlia society during their annual tuber sale. The tubers are usually the latest top varieties. Club members are there to answer your questions and the proceeds go to help dahlia societies promote this beautiful flower.

Next month:
Spring Garden Preparation

Fighting Invasive Plants in Ohio

Of the approximately 2300 species of plants known to occur in the wild in Ohio, about 78% are native or they occurred in Ohio before the time of substantial European settlement about 1750. The other 22%, more than 500 species, are not native to Ohio, having been introduced from other states or countries.

Many plants considered non-native, alien, or exotic are popular, aesthetically pleasing species. It is important to look beyond these traits. Sometimes we plant invasive non-native plants for landscaping or wildlife habitat without realizing the problems they may cause when they escape into natural areas.

Without natural controls, invasive non-native plants are able to spread quickly. In some Ohio wetlands, large plots of a single invasive plant species have crowded out areas that were once filled with a wide variety of important native plants. In Ohio's woods, native spring wildflowers are quickly replaced by garlic mustard and invasive bush honeysuckle species. A diverse, healthy ecosystem is important for clean air and water, soil stability, buffer, and food and shelter for wildlife.

OHIO'S TOP TEN INVASIVE PLANTS

- Autumn-Olive (*elaegnus umbellata*)
- Bush Honeysuckles (Morrow, Amur, Tatarian)
- Buckthorns (*rhamnus frangula* and *cathartica*)
- Common Reed Grass (*phragmites australis*)
- Garlic Mustard (*alliaria petiolata*)
- Japanese Honeysuckle (*Lonicera japonica*)
- Japanese Knotweed (*polygonum cuspidatum*)
- Multiflora Rose (*rosa multiflora*)
- Purple Loosestrife (*lythrum salicaria*)
- Reed Canary Grass (*phalaris arundinacea*)

What You Can Do To Help

- **Visit www.ohiodnr.com/dnap for more information, pictures, and ways to control or eliminate invasive non-native plants.**
- **Spread the word about the threats of invasive plants in Ohio and the benefits provided by native plant communities.**
- **Familiarize yourself with the invasive plants in your area and report infestations to the nearest land-managing agency or extension service.**
- **Be careful not to gather and transport unidentified seeds which may spread invasive plants.**
- **Volunteer with your local land-managing agency (parks, nature preserves, hiking trails) to help control invasive plants.**
- **Plant native or non-invasive plants in your yard and garden; eradicate invasive plants on your property.**
- **Encourage nurseries to avoid invasive non-native plants and stock alternative native or non-invasive plant species.**



**SPECIAL NOTICE FOR
MEMBERSHIPS
From John Bendokaitis**

Please check the mailing label on this digest
for one of these statements:

DUES ARE DUE or DUES ARE PAID

Please let me know if there is an error in my records.

MAIL FORM on NEXT PAGE and PAYMENT TO:
DSO MEMBERSHIP CHAIRMAN
JOHN R. BENDOKAITIS
17182 EASTVIEW DR
CHAGRIN FALLS, OHIO 44023

NOTE!!

If you are not a member of the American Dahlia Society,
consider joining NOW. It is truly worth it!
Why? What are the benefits?

- You will get the CLASSIFICATION HANDBOOK
- You will get the colorful and informative ADS BULLETIN
- You will also receive the AMERICAN DAHLIA GUIDE TO GROWING AND CARING FOR DAHLIAS.
- You will be entitled to vote in election of ADS officers, and all other privileges of membership.



CHECK YOUR NAME AND ADDRESS ON THE OTHER SIDE
SUBMIT ANY CHANGES BELOW

**TO MAKE RENEWAL EASIER, SIMPLY TEAR OFF
THIS PAGE, INITIAL AND MAIL WITH YOUR
CHECK TO JOHN BENDOKAITIS**

**PLEASE MAKE CHECK PAYABLE TO
DAHLIA SOCIETY OF OHIO**

DATE _____

NAME _____

CHANGES _____

EMAIL _____

**PLEASE CHOOSE ONLY ONE OF THE FOLLOWING
MEMBERSHIP OPTIONS. Place an X in [].**

[] DSO Membership (includes husband and wife)\$10.00

[] DSO with ADS MEMBERSHIP (for one person only)..\$30.00

[] DSO with ADS FAMILY Membership.....\$33.00

[] DSO with ADS STUDENT Membership.....\$15.00
(18 YRS OLD OR YOUNGER)

ADDITIONAL OPTIONS:

[] ADS First Class Mailing for December ADD \$ 3.00 TO ABOVE

[] DSO with ADS SNOWBIRD OPTION—INDIVIDUAL \$38.00##

[] DSO with ADS SNOWBIRD OPTION—FAMILY..... \$41.00##

**## INCLUDE WINTER ADDRESS FOR SNOW BIRD
MAILING _____**
